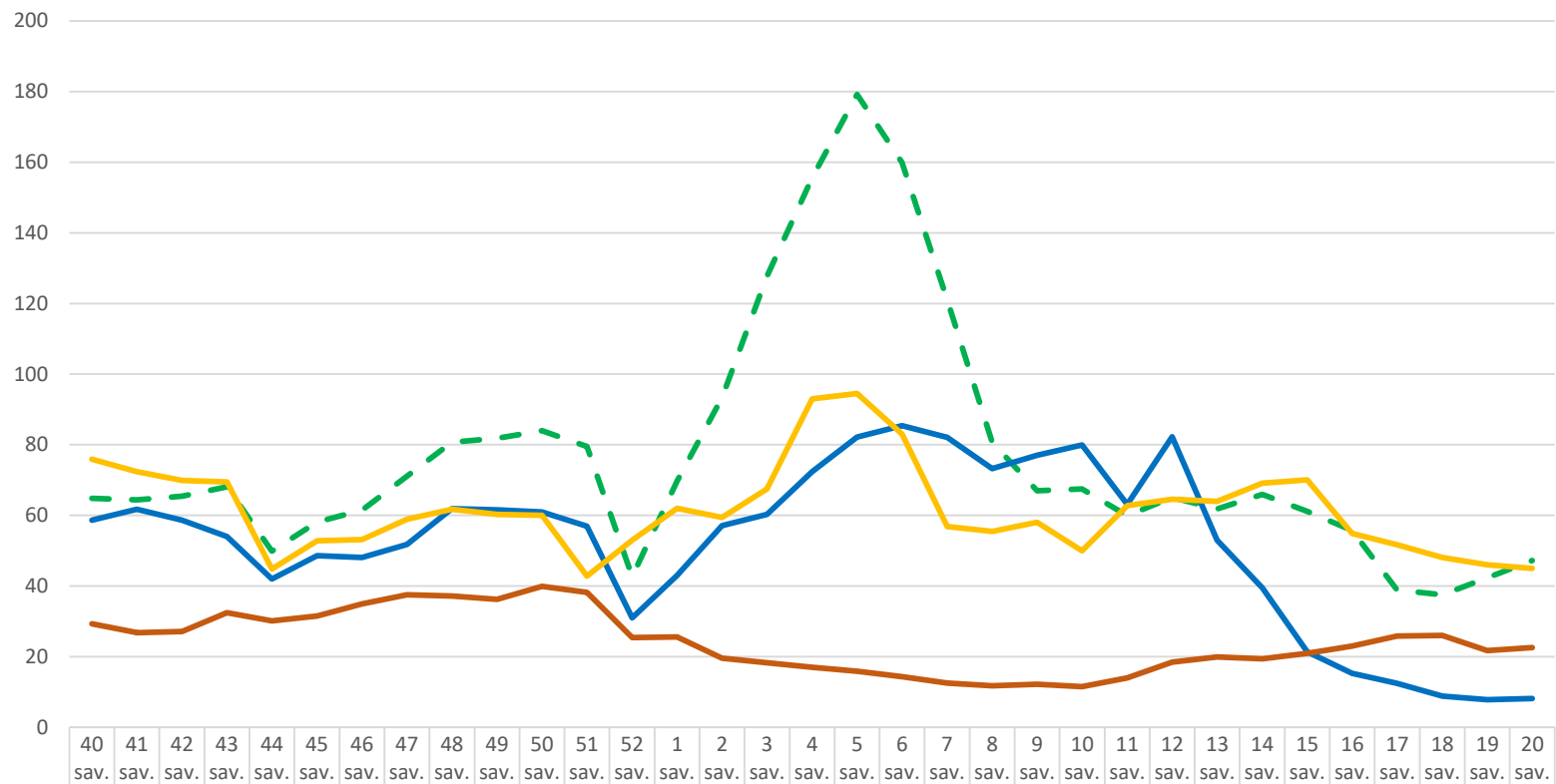


Sergamumo gripu ir ŪVKTI rodiklis (atv. skč. / 10 tūkst. gyv.)



	40 sav.	41 sav.	42 sav.	43 sav.	44 sav.	45 sav.	46 sav.	47 sav.	48 sav.	49 sav.	50 sav.	51 sav.	52 sav.	1 sav.	2 sav.	3 sav.	4 sav.	5 sav.	6 sav.	7 sav.	8 sav.	9 sav.	10 sav.	11 sav.	12 sav.	13 sav.	14 sav.	15 sav.	16 sav.	17 sav.	18 sav.	19 sav.	20 sav.
2018-2019 m.	64.8	64.4	65.4	68.1	49.9	58.1	61.5	71.1	80.7	81.8	84.0	79.5	42.7	69.7	93.3	127.1	156	179	160	121.	80.7	67.0	67.5	59.9	65.1	61.8	65.9	61.1	55.7	38.9	37.5	42.3	47.2
2019-2020 m.	58.6	61.7	58.6	54.0	42.0	48.6	48.1	51.8	61.9	61.6	61.0	56.9	31.0	43.0	57.1	60.3	72.4	82.2	85.4	82.1	73.2	77.0	79.9	63.1	82.3	53.0	39.5	21.4	15.3	12.4	8.8	7.8	8.1
2020-2021 m.	29.3	26.8	27.1	32.4	30.1	31.5	34.9	37.5	37.2	36.2	39.9	38.2	25.4	25.6	19.6	18.3	17.0	15.9	14.3	12.5	11.7	12.2	11.5	14.0	18.4	19.9	19.4	20.9	23.0	25.8	26.0	21.7	22.6
2021-2022 m.	75.9	72.4	69.9	69.5	44.8	52.8	53.1	58.9	61.7	60.3	60.0	42.8	53	62	59.4	67.5	93	94.5	83	56.8	55.5	58.0	50	62.8	64.6	64	69.1	70.1	54.9	51.7	48.1	46	45